

9.2.1 TECHNICAL DATA

MAX OPERATING PRESSURE: 400 BAR

PRESSURE TEST: 1.43 X PS

NOMINAL SIZE: 6, 10, 20

BODY MATERIAL: galvanized carbon steel

SEALS MATERIAL: Nitrile (NBR)
Viton (FKM)

See Table 9.2c and or Section 1.8

WEIGHT: see Table 9.2

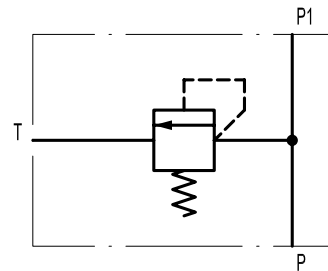


9.2a

9.2.2 DESCRIPTION

These blocks are used for installation of safety valves type DBDS (see Section 9.1) which must be ordered separately. The BPV type is built in sizes 6, 10, 20 and in the "G" versions with the threaded connections BSP ISO 228 or in the "P" version for mounting on plate. BAPV type instead can be mounted through a double thread nipple directly on the fluid valve of the bladder accumulators with a connection of 1"1/4 (type AS5 and ASA1) or 2" BSP (type AS10÷55, ASA2.5÷15) or with appropriate adaptors (see Section 9.4) directly on the back side of a fluid piston accumulator. This version is built only to accommodate the safety valves DBDS10.

9.2.2 HYDRAULIC SYMBOL



9.2b

9.2.3 ORDER CODE

BPV	6	G	-	C	P
------------	----------	----------	----------	----------	----------

Series	
Valve-holder block	= BPV

Nominal sizes	
Size 6	= 6
Size 10	= 10
Size 20	= 20

Connections P and T	
Thread BSP ISO 228	= G
Plate mounting	= P

Seals material	
Nitrile NBR	= P
Viton (FKM)	= V

Body Material	
Carbon steel	= C



BAPV	10	A/G	-	C	P
-------------	-----------	------------	----------	----------	----------

Series
Valve-holder block for accumulator = BAPV

Nominal sizes
Size 10 = 10

Connections P and T
Accumulator connection 1" 1/4-2" = A/G fluid port connection 1" 1/4-2" BSP

Seals material
Nitrile NBR = P Viton (FKM) = V

Body Material
Carbon steel = C